

ACCESORIOS FILPRESS AISI-316L - PERFIL F
FILPRESS PRESSFITTINGS AISI-316L - PROFILE F
FILPRESS RACCORDS À SERTIR EN ACIER INOXYDABLE AISI-316L
FILPRESS PRESSFITTINGS AUS EDELSTAHL 1.4404 FÜR DÜNNWANDIGE EDELSTAHLROHRE - PRESSKONTUR F

ACCESORIOS INSTALPRESS AISI-316L - PERFIL M
INSTALPRESS PRESSFITTINGS AISI-316L - PROFILE M
INSTALPRESS RACCORDS À SERTIR EN ACIER INOXYDABLE AISI-316L
INSTALPRESS PRESSFITTINGS AUS EDELSTAHL 1.4404 FÜR DÜNNWANDIGE EDELSTAHLROHRE - PRESSKONTUR M

ACCESORIOS ACERO AL CARBONO - PERFIL M
STEEL ZINC PLATED PRESSFITTINGS - M PROFILE
RACCORDS À SERTIR EN ACIER GALVANISÉ
C-STAHLE PRESSFITTINGS - PRESSKONTUR M

ACCESORIOS ACERO AL CARBONO FIREPRESS - PERFIL M
FIREPRESS STEEL ZINC PLATED PRESSFITTINGS - M PROFILE
FIREPRESS RACCORDS À SERTIR EN ACIER GALVANISÉ
FIREPRESS C-STAHLE PRESSFITTINGS - PRESSKONTUR M

JUNTAS
O-RINGS
JOINTS
DICHTUNG

MÁQUINAS DE PRENSAR
PRESS MACHINES
MACHINES PRESSER
PRESSMASCHINEN

ACCESORIOS CAPILARES AISI-316
CAPILLARY FITTINGS AISI-316
ACCESSOIRES CAPILLAIRES - AISI-316
LÖTFITTINGS 1.4401

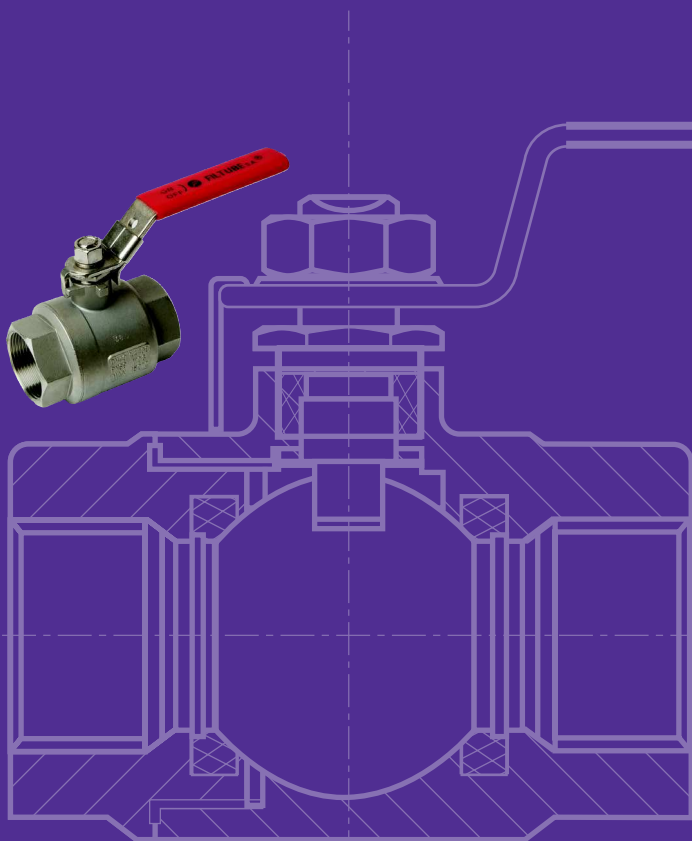
ABRAZADERAS
PIPE CLAMPS
COLLIERS DE FIXATION
ROHRSCHELLEN

VÁLVULAS AISI-316
VALVES AISI-316
BOISSEAUX AISI-316
KUGELHÄHNE EDELSTAHL 1.4401

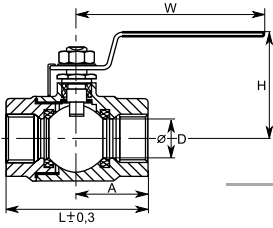
ACCESORIOS ROSCADOS DIN-2999 AISI-316
THREADED FITTINGS DIN-2999 AISI-316
ACCESSOIRES FILETÉS DIN-2999 AISI-316
GEWINDEFITTINGE DIN-2999 1.4401

ACCESORIOS DE COMPRESIÓN DIN-2353 AISI-316
COMPRESSION FITTINGS DIN-2353 AISI-316
RACCORDS À COMPRESSION DIN-2353 AISI-316
SCHNEIDRINGVERSCHRAUBUNGEN DIN-2353 1.4401

MANUAL TÉCNICO PRESSFITTINGS INSTALPRESS
PRESSFITTINGS INSTALPRESS TECHNICAL MANUAL

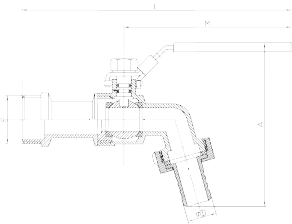


VÁLVULA DE BOLA PASO TOTAL DOS PIEZAS, ROSCA DIN-2999 PN 64 (1000 PSI WOG) • FULL PORT BALL VALVE, 2 PC BODY SCREWED END DIN-2999 PN 64 (1000 PSI WOG) • ROBINET 2 PIÈCES FEMELLE-FEMELLE PASSAGE INTEGRAL DIN-2999 PN 64 (1000 PSI WOG) • KUGELHAHN 2-TEILING DIN-2999 PN 64 (1000 PSI WOG) INOX 316 INNENGEWINDE



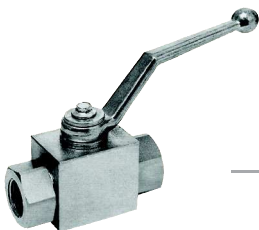
Ref.	Ø	D	L	A	H	W	Peso / Weight / Poid / Gewicht Kg	U. /
60V2C14	1/4"	11,6	55	27,5	50	96	0,162	1
60V2C38	3/8"	12,7	55	27,5	50	96	0,164	1
60V2C12	1/2"	15	65	32,5	53	96	0,225	1
60V2C34	3/4"	20	77	38,5	64	125	0,343	1
60V2C1	1"	25	90	45	66	125	0,522	1
60V2C114	1 1/4"	32	102	51	79	170	0,883	1
60V2C112	1 1/2"	38	108	54	83	170	1,243	1
60V2C2	2"	50,8	125	62,5	94	190	1,920	1
60V2C212	2 1/2"	65	167	83,5	136	250	3,580	1
60V2C3	3"	77	181	90,5	149	250	5,420	1

GRIFO JARDÍN • GARDEN BALL VALVE • ROBINET SPHÉRIQUE DE JARDIN • KUGELHAHN GARDEN E



Ref.	Ø	D	L	A	H	W	Peso / Weight / Poid / Gewicht Kg	U. /
63GMI12	1/2"	87	13	145	92	G 1/2"	0,220	1
63GMI34	3/4"	87	16	155	92	G 3/4"	0,280	1
63GMI1	1"	120	27,5	185	115	G 1"	0,450	1

VÁLVULA BOLA PN 500 AISI-316 • HIGH PRESSURE BALL VALVE AISI-316 • ROBINET POUR PRESSION ELEVEE AISI-316 • HOCHDRUCK-KUGELHAHN EDELSTAHL 1.4401



Ref.	Ø	Peso / Weight / Poid / Gewicht Kg	U. /
63GMI12	1/2"	0,650	1
63GMI34	3/4"	0,950	1