



**ACCESORIOS FILPRESS AISI-316L - PERFIL F**  
 FILPRESS PRESSFITTINGS AISI-316L - PROFILE F  
 FILPRESS RACCORDS À SERTIR EN ACIER INOXYDABLE AISI-316L  
 FILPRESS PRESSFITTINGS AUS EDELSTAHL 1.4404 FÜR DÜNNWANDIGE EDELSTAHLROHRE - PRESSKONTUR F

ACCESORIOS INSTALPRESS AISI-316L - PERFIL M  
 INSTALPRESS PRESSFITTINGS AISI-316L - PROFILE M  
 INSTALPRESS RACCORDS À SERTIR EN ACIER INOXYDABLE AISI-316L  
 INSTALPRESS PRESSFITTINGS AUS EDELSTAHL 1.4404 FÜR DÜNNWANDIGE EDELSTAHLROHRE - PRESSKONTUR M

ACCESORIOS ACERO AL CARBONO - PERFIL M  
 STEEL ZINC PLATED PRESSFITTINGS - M PROFILE  
 RACCORDS À SERTIR EN ACIER GALVANISÉ  
 C-STAHl PRESSFITTINGS - PRESSKONTUR M

ACCESORIOS ACERO AL CARBONO FIREPRESS - PERFIL M  
 FIREPRESS STEEL ZINC PLATED PRESSFITTINGS - M PROFILE  
 FIREPRESS RACCORDS À SERTIR EN ACIER GALVANISÉ  
 FIREPRESS C-STAHl PRESSFITTINGS - PRESSKONTUR M

JUNTAS  
 O-RINGS  
 JOINTS  
 DICHTUNG

MÁQUINAS DE PRENSAR  
 PRESS MACHINES  
 MACHINES PRESSER  
 PRESSMASCHINEN

ACCESORIOS CAPILARES AISI-316  
 CAPILLARY FITTINGS AISI-316  
 ACCESSOIRES CAPILLAIRES - AISI-316  
 LÖTFITTINGS 1.4401

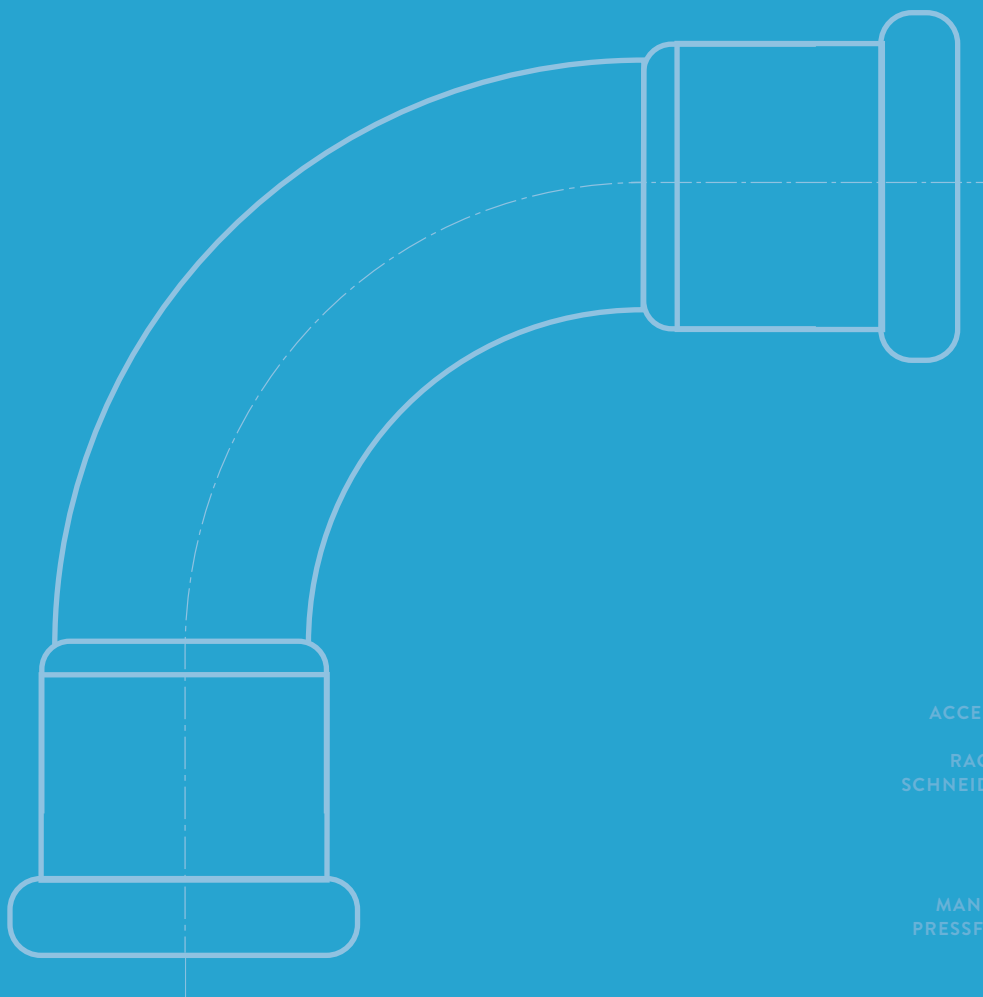
ABRAZADERAS  
 PIPE CLAMPS  
 COLLIERS DE FIXATION  
 ROHRSCHELLEN

VÁLVULAS AISI-316  
 VALVES AISI-316  
 BOISSEAUX AISI-316  
 KUGELHÄHNE EDELSTAHL 1.4401

ACCESORIOS ROSCADOS DIN-2999 AISI-316  
 THREADED FITTINGS DIN-2999 AISI-316  
 ACCESSOIRES FILETÉS DIN-2999 AISI-316  
 GEWINDEFITTINGE DIN-2999 1.4401

ACCESORIOS DE COMPRESIÓN DIN-2353 AISI-316  
 COMPRESSION FITTINGS DIN-2353 AISI-316  
 RACCORDS À COMPRESSION DIN-2353 AISI-316  
 SCHNEIDRINGVERSCHRAUBUNGEN DIN-2353 1.4401

MANUAL TÉCNICO PRESSFITTINGS INSTALPRESS  
 PRESSFITTINGS INSTALPRESS TECHNICAL MANUAL



**TUBO SANITARIO EN-10312 (AISI-304L) • SANITARY PIPE EN-10312 (AISI-304L) • TUBE SANITAIRE EN-10312 (AISI-304L) • SANITÄR-ROHR EN-10312 (EDELSTAHL 1.4307)**



Tubo Brillante Pickled Pipe Tube Standard Standar Rohr Ref.	Tubo Pulido Mirror Polished Pipe Tube Poli Miroir Poliertes Rohr Ref.	Ø x Espesor / Thickness / Épaisseur / Dicke	Largo / Length / Longeur / Länge (mm)	Peso / Weight / Poid / Gewicht (+/-) Kg/m	Presión de Trabajo / Working Pressure / Pression de Service / Arbeitsdruck Kg/cm
10210X06	102P10X06	10 x 0,6	5.000	0,141	133
10212X06	102P12X06	12 x 0,6	5.000	0,171	111
10215X06	102P15X06	15 x 0,6	5.000	0,216	88
10218X07	102P18X07	18 x 0,7	5.000	0,303	86
10222X07	102P22X07	22 x 0,7	5.000	0,373	70
10228X08	102P28X08	28 x 0,8	5.000	0,545	63
10235X10	102P35X10	35 x 1,0	5.000	0,851	63
10242X12	102P42X12	42 x 1,2	5.000	1,226	63
10254X12	102P54X12	54 x 1,2	5.000	1,587	49
122761X20	122P761X20	76,1 x 2,0	6.000	3,711	58
122889X20	122P889X20	88,9 x 2,0	6.000	4,352	49
122108X20	122P108X20	108,0 x 2,0	6.000	5,308	41

**TUBO SANITARIO EN-10312 (AISI-316L) • SANITARY PIPE EN-10312 (AISI-316L) • TUBE SANITAIRE EN-10312 (AISI-316L) • SANITÄR-ROHR EN-10312 (EDELSTAHL 1.4404)**



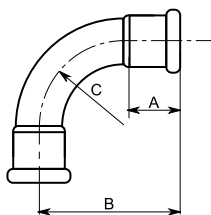
Tubo Brillante Pickled Pipe Tube Standard Standar Rohr Ref.	Tubo Pulido Mirror Polished Pipe Tube Poli Miroir Poliertes Rohr Ref.	Ø x Espesor / Thickness / Épaisseur / Dicke	Largo / Length / Longeur / Länge (mm)	Peso / Weight / Poid / Gewicht (+/-) Kg/m	Presión de Trabajo / Working Pressure / Pression de Service / Arbeitsdruck Kg/cm
10410X06	104P10X06	10 x 0,6	5.000	0,141	133
10412X06	104P12X06	12 x 0,6	5.000	0,171	111
10415X06	104P15X06	15 x 0,6	5.000	0,216	88
10418X07	104P18X07	18 x 0,7	5.000	0,303	86
10422X07	104P22X07	22 x 0,7	5.000	0,373	70
10428X08	104P28X08	28 x 0,8	5.000	0,545	63
10435X10	104P35X10	35 x 1,0	5.000	0,851	63
10442X12	104P42X12	42 x 1,2	5.000	1,226	63
10454X12	104P54X12	54 x 1,2	5.000	1,587	49

**TUBO SANITARIO DVGW (AISI-316L) • SANITARY PIPE DVGW (AISI-316L) • TUBE SANITAIRE DVGW (AISI-316L) • SANITÄR-ROHR DVGW (EDELSTAHL 1.4404)**



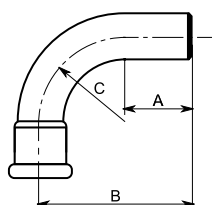
Tubo Brillante Pickled Pipe Tube Standad Standar Rohr Ref.	Tubo Pulido Mirror Polished Pipe Tube Poli Miroir Poliertes Rohr Ref.	Ø x Espesor / Thickness / Épaisseur / Dicke	Largo / Length / Longeur / Länge (mm)	Peso / Weight / Poid / Gewicht (+/-) Kg/m	Presión de Trabajo / Working Pressure / Pression de Service / Arbeitsdruck Kg/cm
12415X10	124P15X10	15 x 1,0	6.000	0,303	86
12418X10	124P18X10	18 x 1,0	6.000	0,373	70
12422X12	124P22X12	22 x 1,2	6.000	0,545	63
12428X12	124P28X12	28 x 1,2	6.000	0,851	63
12435X15	124P35X15	35 x 1,5	6.000	1,226	63
12442X15	124P42X15	42 x 1,5	6.000	1,587	49
12454X15	124P54X15	54 x 1,5	6.000	3,711	58
124761X20	124P761X20	76,1 x 2,0	6.000	4,352	49
124889X20	124P889X20	88,9 x 2,0	6.000	4,352	49
124108X20	124P108X20	108,0 x 2,0	6.000	5,308	41

**CURVA 90° HH • BEND 90° PRESS X PRESS • COUDE 90° FF • BOGEN 90° II**



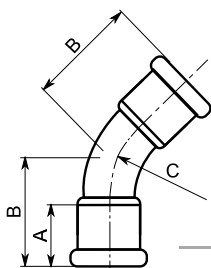
Ref.	Ø	A	B	C	Peso / Weight / Poid / Gewicht Kg	U. /
26C90HH15	15 x 15	16	49	28	0,040	25
26C90HH18	18 x 18	18	52	32	0,054	25
26C90HH22	22 x 22	21	60	38	0,068	15
26C90HH28	28 x 28	25,5	78	50	0,100	5
26C90HH35	35 x 35	28	100	68	0,139	5
26C90HHRC42	42 x 42	31	94	55	0,314	5
26C90HHRC54	54 x 54	35	108	65	0,499	3
26C90HHRC76	76,1 x 76,1	53	162	91	0,977	1
26C90HH88	88,9 x 88,9	56	219	135	1,325	1
26C90HH108	108,0 x 108,0	79	266	165	2,091	1

**CURVA 90° HM • BEND 90° Ø X PRESS • COUDE 90° FM • BOGEN 90° IA**

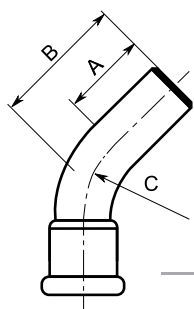


Ref.	Ø	A	B	C	Peso / Weight / Poid / Gewicht Kg	U. /
26C90HM15	15 x 15	25,5	55	28	0,041	25
26C90HM18	18 x 18	25	57	32	0,049	25
26C90HM22	22 x 22	25	66	38	0,069	15
26C90HM28	28 x 28	41	82	50	0,103	5
26C90HM35	35 x 35	35	110	68	0,140	5
26C90HMRC42	42 x 42	33	103	55	0,260	5
26C90HMRC54	54 x 54	37	110	65	0,400	3
26C90HMRC76	76,1 x 76,1	63	183	91	0,982	1
26C90HM88	88,9 x 88,9	85	240	135	1,317	1
26C90HM108	108,0 x 108,0	77	290	162	2,068	1

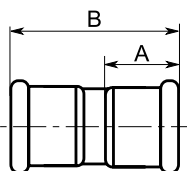
**CURVA 45° HH • BEND 45° PRESS X PRESS • COUDE 45° FF • BOGEN 45° II**



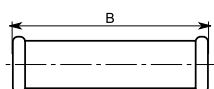
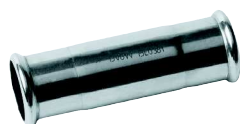
Ref.	Ø	A	B	C	Peso / Weight / Poid / Gewicht Kg	U. /
26C45HH15	15 x 15	16	32	28	0,034	25
26C45HH18	18 x 18	18,5	33	32	0,041	25
26C45HH22	22 x 22	21,5	37	38	0,057	25
26C45HH28	28 x 28	25,5	47	50	0,083	10
26C45HH35	35 x 35	27	63	68	0,113	10
26C45HH42	42 x 42	33	72	80	0,254	10
26C45HH54	54 x 54	34	85	108	0,369	5
26C45HH76	76,1 x 76,1	67	138	115	0,773	1
26C45HH88	88,9 x 88,9	58	134	135	0,991	1
26C45HH108	108,0 x 108,0	72	165	165	1,600	1

**CURVA 45° HM • BEND 45° Ø X PRESS • COUDE 45° FM • BOGEN 45° IA**


Ref.	Ø	A	B	C	Peso / Weight / Poid / Gewicht Kg	U. /
26C45HM15	15 x 15	25	36,5	28	0,037	25
26C45HM18	18 x 18	26	36	32	0,041	25
26C45HM22	22 x 22	32	43,5	38	0,060	25
26C45HM28	28 x 28	32	50,3	50	0,082	10
26C45HM35	35 x 35	38	75	68	0,112	10
26C45HM42	42 x 42	40	80	80	0,237	10
26C45HM54	54 x 54	42	106	108	0,366	5
26C45HM76	76,1 x 76,1	71	140	115	0,767	1
26C45HM88	88,9 x 88,9	64	165	135	0,998	1
26C45HM108	108,0 x 108,0	79	190	165	1,510	1

**MANGUITO HH • STRAIGHT COUPLING PRESS X PRESS • MANCHON FF • MUFFE II**


Ref.	Ø	A	B	Peso / Weight / Poid / Gewicht Kg	U. /
26M15	15 x 15	15	39,5	0,027	25
26M18	18 x 18	16,5	44	0,031	25
26M22	22 x 22	20	51,5	0,043	25
26M28	28 x 28	22,5	61	0,055	10
26M35	35 x 35	26	68	0,076	10
26M42	42 x 42	32	82	0,147	10
26M54	54 x 54	36	90	0,205	5
26M76	76,1 x 76,1	53	148	0,604	1
26M88	88,9 x 88,9	56	170	0,837	1
26M108	108,0 x 108,0	73	197	1,193	1

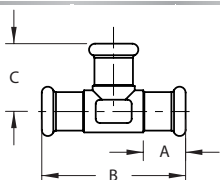
**MANGUITO SINFÍN • SLEEVE COUPLING PRESS X PRESS • MANCHON COULISSANT FF • SCHIEBEMUFFE II**


Ref.	Ø	B	Peso / Weight / Poid / Gewicht Kg	U. /
26MST15	15 x 15	78	0,033	10
26MST18	18 x 18	77	0,044	15
26MST22	22 x 22	82,5	0,060	15
26MST28	28 x 28	89,5	0,080	10
26MST35	35 x 35	102	0,104	10
26MST42	42 x 42	121	0,216	10
26MST54	54 x 54	142	0,316	5
26MST76	76,1 x 76,1	230	0,874	1
26MST88	88,9 x 88,9	260	1,196	1
26MST108	108,0 x 108,0	310	1,775	1

**TE IGUAL UNA PIEZA • ONE PIECE PART T-COUPLING 3 X PRESS • MONOBLOC TÉ ÉGAL FEMELLE • T-STÜCK EINTEILIG**



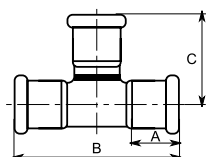
Ref.	Ø	A	B	C	Peso / Weight / Poid / Gewicht Kg	U. /
26T42	42 x 42 x 42	33	117	64	0,275	5



**TE IGUAL SOLDADA • WELDED T-COUPLING 3 X PRESS • SOUDÉ TÉ ÉGAL FEMELLE • T-STÜCK GESCHWEIßT**



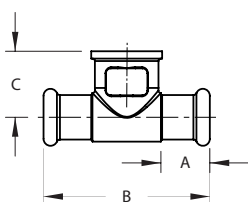
Ref.	Ø	A	B	C	Peso / Weight / Poid / Gewicht Kg	U. /
26T15	15 x 15 x 15	16	67	34	0,047	25
26T18	18 x 18 x 18	17	68,5	34	0,059	15
26T22	22 x 22 x 22	20	75	39	0,078	15
26T28	28 x 28 x 28	26	91	46,5	0,104	5
26T35	35 x 35 x 35	29	110	54	0,132	5
26TW42	42 x 42 x 42	33	117	64	0,275	5
26TW54	54 x 54 x 54	33	146	74,5	0,382	3
26TW76	76,1 x 76,1 x 76,1	54	230	115	1,192	1
26TW88	88,9 x 88,9 x 88,9	58,5	260	127	1,617	1
26TW108	108,0 x 108,0 x 108,0	71	310	160	2,450	1

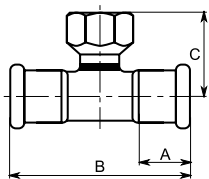


**TE ROSCADA UNA PIEZA • OPP T-COUPLING PRESS X FEMALE X PRESS • MONOBLOC TÉ TARAUDÉ • T-STÜCK EINTEILIG IG**



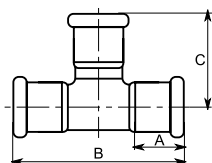
Ref.	Ø	A	B	C	Peso / Weight / Poid / Gewicht Kg	U. /
26TH42X12	42 x 1/2"	32,5	117	44	0,359	5
26TH42X34	42 x 3/4"	33	116	48,5	0,379	5



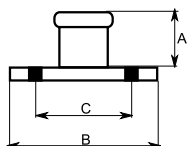
**TE ROSCADA SOLDADA • WELDED T-COUPLING PRESS X FEMALE X PRESS • TÉ TARAUDÉ SOUDÉ • T-STÜCK GESCHWEIßT IG**


Ref.	Ø	A	B	C	Peso / Weight / Poid / Gewicht Kg	U. /
26TH15X12	15 x 1/2"	19	63,5	33	0,090	10
26TH18X12	18 x 1/2"	17	68,5	36	0,064	10
26TH18X34	18 x 3/4"	17	67,5	39	0,102	10
26TH22X12	22 x 1/2"	21	75	36,5	0,125	10
26TH22X34	22 x 3/4"	20	75	42	0,105	10
26TH28X12	28 x 1/2"	23	90	36,5	0,092	10
26TH28X34	28 x 3/4"	23	90	44	0,128	10
26TH35X12	35 x 1/2"	26,5	110	39,5	0,173	5
26TH35X34	35 x 3/4"	27,5	110	49	0,180	5
26THW42X12	42 x 1/2"	32,5	117	44	0,240	5
26THW42X34	42 x 3/4"	33	116	48,5	0,254	5
26THW54X12	54 x 1/2"	35	146	48	0,362	3
26THW54X34	54 x 3/4"	35	145	58,5	0,364	3
26THW54X20	54 x 2"	33	146	85	0,523	3
26THW76X34	76,1 x 3/4"	54	230	70	1,009	1
26THW76X20	76,1 x 2"	54	230	98	1,194	1
26THW88X34	88,9 x 3/4"	55,5	260	76	1,210	1
26THW88X20	88,9 x 2"	60,5	260	100	1,450	1
26THW108X34	108,0 x 3/4"	79	310	86	1,956	1
26THW108X20	108,0 x 2"	69	310	112	2,118	1

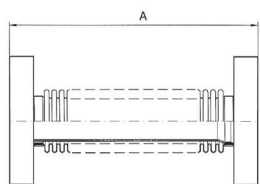
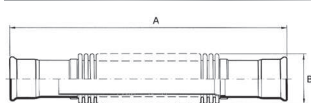
TE REDUCCIÓN HHH • T-COUPLING REDUCTION 3 X PRESS • TÉ RÉDUIT • T-STÜCK REDUZIERT



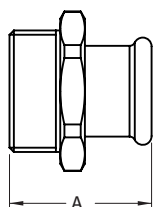
Ref.	Ø	A	B	C	Peso / Weight / Poid / Gewicht Kg	U. /
26TR18X15	18 x 15 x 18	16,5	68,5	38,5	0,058	15
26TR22X15	22 x 15 x 22	20	75	38,5	0,069	15
26TR22X18	22 x 18 x 22	19	75	36,5	0,074	15
26TR28X15	28 x 15 x 28	21	90	41,5	0,091	5
26TR28X18	28 x 18 x 28	23	91	38,5	0,092	5
26TR28X22	28 x 22 x 28	21	90	43,5	0,098	5
26TR35X15	35 x 15 x 35	29	110	41	0,115	5
26TR35X18	35 x 18 x 35	27	120	42	0,115	5
26TR35X22	35 x 22 x 35	25	110	47	0,120	5
26TR35X28	35 x 28 x 35	27	110	49	0,123	5
26TR42X22	42 x 22 x 42	30	117	51	0,167	5
26TR42X28	42 x 28 x 42	30	117	54	0,168	5
26TR42X35	42 x 35 x 42	30	117	59	0,169	5
26TR54X22	54 x 22 x 54	33	145	57	0,228	5
26TR54X28	54 x 28 x 54	33	145	60	0,244	4
26TR54X35	54 x 35 x 54	33	146	65	0,241	4
26TR54X42	54 x 42 x 54	33	146	70	0,368	4
26TR76X22	76,1 x 22 x 76,1	54	230	67	0,659	1
26TR76X28	76,1 x 28 x 76,1	66	245	73	0,669	1
26TR76X35	76,1 x 35 x 76,1	53	230	77	0,678	1
26TR76X42	76,1 x 42 x 76,1	53	230	82	0,981	1
26TR76X54	76,1 x 54 x 76,1	53	230	85	1,067	1
26TR88X22	88,9 x 22 x 88,9	82	277	74	0,879	1
26TR88X28	88,9 x 28 x 88,9	56	260	81	0,871	1
26TR88X35	88,9 x 35 x 88,9	60	260	83	0,887	1
26TR88X42	88,9 x 42 x 88,9	60	260	85	1,271	1
26TR88X54	88,9 x 54 x 88,9	60	260	88	1,297	1
26TR88X76	88,9 x 76,1 x 88,9	58	260	117	1,479	1
26TR108X22	108,0 x 22 x 108,0	69	310	85	1,343	1
26TR108X28	108,0 x 28 x 108,0	75	310	90	1,357	1
26TR108X35	108,0 x 35 x 108,0	71	310	90	1,369	1
26TR108X42	108,0 x 42 x 108,0	73	310	95	1,886	1
26TR108X54	108,0 x 54 x 108,0	67,5	310	105	1,967	1
26TR108X76	108,0 x 76,1 x 108,0	75	310	126	2,147	1
26TR108X88	108,0 x 88,9 x 108,0	75	310	136	2,255	1

**BRIDA ADAPTADOR • FLANGE WITH PRESS-JOINT • BRIDE À BOUT LISSE • FLANSCH MIT PRESSMUFFE**


Ref.	Ø	A	B	C	Peso / Weight / Poid / Gewicht Kg	U. /
26BA15	15	47	95	65	0,407	10
26BA18	18	47	95	65	0,413	10
26BA22	22	50	105	75	0,548	5
26BA28	28	29	115	85	0,764	5
26BA35	35	64	140	100	1,202	3
26BA42	42	42	150	110	2,088	1
26BA54	54	47	165	125	2,834	1
26BA76	76,1	71	185	145	3,546	1
26BA88	88,9	79	200	160	4,344	1
26BA108	108,0	97	220	180	5,251	1

**COMPENSADOR DE DILATACIÓN • EXPANSION COMPENSATOR WITH FLANGES •  
COMPENSATEUR D'EXPANSION AVEC BRIDES • KOMPENSATOR II / MIT FLANSCHEN**


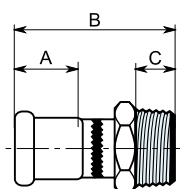
Ref.	Ø	A	B	Peso / Weight / Poid / Gewicht Kg	U. /
26CD15	15 x 15	320	25	0,196	1
26CD18	18 x 18	320	25	0,208	1
26CD22	22 x 22	320	30	0,263	1
26CD28	28 x 28	325	38	0,449	1
26CD35	35 x 35	340	48	0,664	1
26CD42	42 x 42	340	54	0,840	3
26CD54	54 x 54	400	71	1,370	1
26CD76	76,1 x 76,1	286	-	7,402	1
26CD88	88,9 x 88,9	290	-	9,376	1
26CD108	108,0 x 108,0	280	-	10,960	1

**UNIÓN MACHO UNA PIEZA • ONE PIECE PART STRAIGHT ADAPTER MALE X PRESS • RACCORD FILETÉ MONOBLOC •  
ÜBERGANG AG EINTEILIG**


Ref.	Ø	A	B	C	Peso / Weight / Poid / Gewicht Kg	U. /
26UM42X114	42 x 11/4"	33	71	15	0,275	10
26UM42X112	42 x 11/2"	30	57	16	0,280	10
26UM54X20	54 x 2"	35	71	22,5	0,368	5

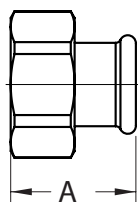


**UNIÓN MACHO SOLDADO • WELDED STRAIGHT ADAPTER MALE X PRESS • RACCORD FILETÉ SOUDÉ • ÜBERGANG AG GESCHWEIßT**



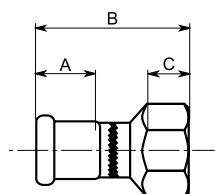
Ref.	Ø	A	B	C	Peso / Weight / Poid / Gewicht Kg	U. /
26UM15X12	15 x 1/2"	17,5	42	11	0,058	10
26UM15X38	15 x 3/8"	17,5	47,5	11,5	0,036	10
26UM18X12	18 x 1/2"	17,5	47,5	13	0,056	10
26UM18X34	18 x 3/4"	16	50,5	14,5	0,085	10
26UM22X34	22 x 3/4"	20	54	15	0,074	10
26UM22X10	22 x 1"	21	58	17	0,117	10
26UM28X10	28 x 1"	23,5	62	18	0,118	10
26UM35X114	35 x 1 1/4"	29	67	15	0,175	10
26UMW42X114	42 x 1 1/4"	33	71	15	0,216	10
26UMW42X112	42 x 1 1/2"	30	57	16	0,204	10
26UMW54X112	54 x 1 1/2"	36	84,5	16,5	0,271	5
26UMW54X20	54 x 2"	35	71	22,5	0,368	5
26UMW76X212	76,1 x 2 1/2"	53,5	123,5	29	0,820	1
26UMW88X30	88,9 x 3"	60	137	33	1,158	1

**UNIÓN HEMBRA UNA PIEZA • ONE PIECE PART STRAIGHT ADAPTER FEMALE X PRESS • RACCORD TARAUDÉ MONOBLOC • ÜBERGANG IG EINTEILIG**



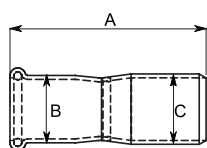
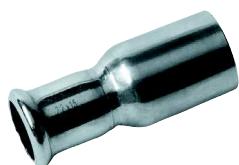
Ref.	Ø	A	B	C	Peso / Weight / Poid / Gewicht Kg	U. /
26UH42X114	42 x 1 1/4"	32,5	83	21	0,220	10

**UNIÓN HEMBRA SOLDADA • WELDED STRAIGHT ADAPTER FEMALE X PRESS • RACCORD TARAUDÉ SOUDÉ • ÜBERGANG IG GESCHWEIßT**



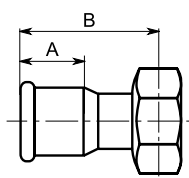
Ref.	Ø	A	B	C	Peso / Weight / Poid / Gewicht Kg	U. /
26UH15X12	15 x 1/2"	19	48,5	12,5	0,055	10
26UH18X12	18 x 1/2"	18	46,5	12,5	0,042	10
26UH18X34	18 x 3/4"	16	52	13,5	0,085	10
26UH22X34	22 x 3/4"	21	56	14,5	0,078	10
26UH22X10	22 x 1"	20,5	53,5	18	0,112	10
26UH28X10	28 x 1"	23,5	57,5	16,5	0,140	10
26UH35X114	35 x 1 1/4"	30	79	20	0,194	10
26UH42X114	42 x 1 1/4"	32,5	83	21	0,220	10
26UHW42X114	42 x 1 1/4"	32,5	83	21	0,221	10
26UHW42X112	42 x 1 1/2"	31	79	23	0,252	10
26UHW54X112	54 x 1 1/2"	36	87	23,5	0,328	5
26UHW54X20	54 x 2"	34,5	98	31,5	0,342	5
26UHW76X212	76,1 x 2 1/2"	53,5	127,5	30	0,877	1

**REDUCCIÓN MH • STRAIGHT COUPLING REDUCTION Ø X PRESS • RÉDUCTION MF • REDUZIERMUFFE IA**



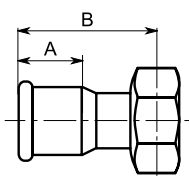
Ref.	Ø	A	B	C	Peso / Weight / Poid / Gewicht Kg	U. /
26RE18X15	18 x 15	23	52	23	0,028	25
26RE22X15	22 x 15	24	56,5	24	0,032	25
26RE22X18	22 x 18	22	55	25	0,033	10
26RE28X15	28 x 15	24	60	26	0,039	10
26RE28X18	28 x 18	24	59	27	0,043	10
26RE28X22	28 x 22	26,5	60	27	0,046	10
26RE35X22	35 x 22	26	70	30	0,062	10
26RE35X28	35 x 28	31	70	30	0,067	10
26RE42X22	42 x 22	25,5	82	36	0,069	10
26RE42X28	42 x 28	29	82	39	0,078	10
26RE42X35	42 x 35	34	82	41	0,083	10
26RE54X15	54 x 15	26,5	96	45	0,088	10
26RE54X22	54 x 22	26	102	41	0,088	10
26RE54X28	54 x 28	30,5	94	41	0,098	10
26RE54X35	54 x 35	34	91	39	0,084	10
26RE54X42	54 x 42	39	97	47	0,191	10
26RE76X42	76,1 x 42	151	119	-	0,395	1
26RE76X54	76,1 x 54	42	150	80	0,451	1
26RE88X54	88,9 x 54	43	166	70	0,586	1
26RE88X76	88,9 x 76	71	163	80	0,653	1
26RE108X54	108,0 x 54	117	245	42	0,880	1
26RE108X76	108,0 x 76,1	71	203	95	0,978	1
26RE108X88	108,0 x 88,9	80	205	95	0,992	1

**RACOR 2 PIEZAS CON CUELLO • JOINT CONNECTOR FEMALE X PRESS • ÉCROU TOURNANT • ÜBERGANGSMUFFE IG**



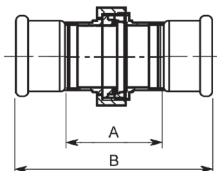
Ref.	Ø	A	B	Peso / Weight / Poid / Gewicht Kg	U. /
26RP15X12	15 x 1/2"	19	36,5	0,042	25
26RP15X34	15 x 3/4"	19	43	0,060	15
26RP18X12	18 x 1/2"	20	38	0,043	15
26RP18X34	18 x 3/4"	21,5	37	0,079	10
26RP22X34	22 x 3/4"	22	43	0,082	10
26RP22X10	22 x 1"	21,5	51	0,149	15
26RP28X10	28 x 1"	24	52	0,157	10
26RP28X114	28 x 1 1/4"	28	48	0,219	10
26RP35X114	35 x 1 1/4"	30	52	0,259	10
26RP42X112	42 x 1 1/2"	32	57,5	0,278	10
26RP54X20	54 x 2"	35	77	0,586	5
26RP54X212	54 x 2 1/2"	35	77	0,954	1
26RP76X212	76,1 x 2 1/2"	53,5	114,5	1,125	1

**RACOR 2 PIEZAS CON JUNTA PLANA • JOINT CONNECTOR FEMALE X PRESS • ÉCROU TOURNANT JOINT FLAT • ÜBERGANGSMUFFE IG - FLACHDICHTEND**



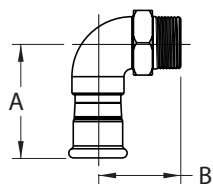
Ref.	Ø	A	B	Peso / Weight / Poid / Gewicht Kg	U. /
26RPJP15X12	15 x 1/2"	19,5	37	0,040	25
26RPJP15X34	15 x 3/4"	19,5	38,5	0,057	15
26RPJP18X12	18 x 1/2"	17	33,5	0,041	15
26RPJP18X34	18 x 3/4"	17	38	0,055	10
26RPJP22X34	22 x 3/4"	22,5	41	0,081	10
26RPJP22X10	22 x 1"	27	43	0,068	15
26RPJP28X10	28 x 1"	24	50,5	0,155	10
26RPJP28X114	28 x 1 1/4"	24	48	0,104	10
26RPJP35X114	35 x 1 1/4"	29	52	0,272	10
26RPJP42X112	42 x 1 1/2"	33	57	0,174	10
26RPJP42X20	42 x 2"	36	69	0,562	5
26RPJP54X20	54 x 2"	36	76	0,592	5
26RPJP54X212	54 x 2 1/2"	36	133	0,941	5
26RPJP54X238	54 x 2 3/8"	27		0,312	1
26RPJP76X212	76,1 x 2 1/2"	53,5	113	0,312	1

**RACOR 3 PIEZAS CÓNICO • JOINT CONNECTOR PRESS X PRESS • RACCORD CONIQUE • VERSCHRAUBUNG MIT PRESSMUFFEN**



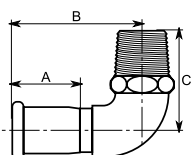
Ref.	Ø	A	B	Peso / Weight / Poid / Gewicht Kg	U. /
26RTP42	42 x 42	60	127	0,461	1
26RTP54	54 x 54	58	146	0,759	1

**CODO MACHO UNA PIEZA • ONE PIECE PART ELBOW TRANSITION MALE X PRESS • COUDE FILETÉ MONOBLOC • WINKEL 90° EINTEILIG AG**



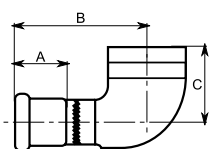
Ref.	Ø	A	B	Peso / Weight / Poid / Gewicht Kg	U. /
26CM42X112	42 x 1 1/2"	31	136	0,280	5
26CM54X20	54 x 2"	97	155	0,320	5

**CODO MACHO SOLDADO • WELDED ELBOW TRANSITION MALE X PRESS • COUDE FILETÉ SOUDÉ • WINKEL 90° GESCHWEIßT AG**



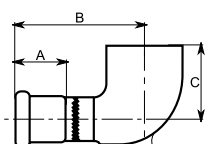
Ref.	Ø	A	B	C	Peso / Weight / Poid / Gewicht Kg	U. /
26CM15X12	15 x 1/2"	18	49	36	0,093	15
26CM18X12	18 x 1/2"	23	48	36	0,091	15
26CMW42X112	42 x 1 1/2"	31	136	67	0,376	3
26CMW54X20	54 x 2"	97	155	70	0,667	1

**CODO HEMBRA SOLDADO • WELDED ELBOW TRANSITION FEMALE X PRESS • COUDE TARAUDÉ SOUDÉ • WINKEL 90° GESCHWEIßT IG**



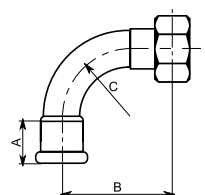
Ref.	Ø	A	B	C	Peso / Weight / Poid / Gewicht Kg	U. /
26CH15X12	15 x 1/2"	19	49,5	27	0,071	15
26CH18X12	18 x 1/2"	16	48	27	0,082	15
26CH22X34	22 x 3/4"	22	56	30	0,134	15
26CH28X12	28 x 1/2"	25	57	27,5	0,098	10

**CODO PLACA SOLDADO • WELDED WALLPLATE FEMALE X PRESS • COUDE TARAUDÉ AVEC APPLIQUE SOUDÉ • DECKENWINKEL 90° GESCHWEIßT IG**



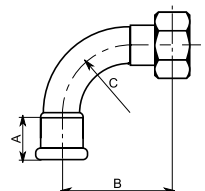
Ref.	Ø	A	B	C	Peso / Weight / Poid / Gewicht Kg	U. /
26CF15X12	15 x 1/2"	18,5	47,5	27	0,100	15
26CF18X12	18 x 1/2"	20	48	27	0,118	15
26CF22X34	22 x 3/4"	24	53,5	31	0,142	10
26CF28X10	28 x 1"	28	68,5	39	0,206	10

**CURVA 2 PIEZAS • BEND 2 PICES • COUDE ÉCROU TOURNANT • ÜBERGANGSWINKEL 90° IG**

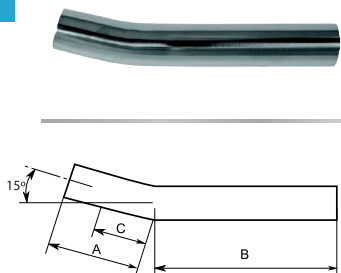


Ref.	Ø	A	B	C	Peso / Weight / Poid / Gewicht Kg	U. /
26CP15X12	15 x 1/2"	16,5	45	28	0,057	25
26CP18X12	18 x 1/2"	19	51	32	0,066	15
26CP18X34	18 x 3/4"	19	54,5	32	0,103	10
26CP22X34	22 x 3/4"	22	67,5	38	0,114	10
26CP22X10	22 x 1"	22	72,5	38	0,181	10

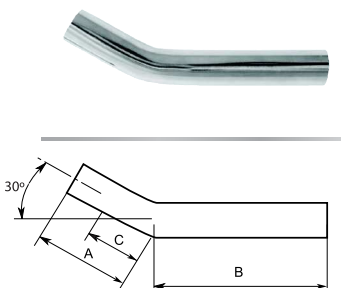
**CURVA 2 PIEZAS JUNTA PLANA • BEND 2 PICES FLAT JOINT • COUDE ÉCROU TOURNANT JOINT FLAT • ÜBERGANGSWINKEL 90° IG - FLACHDICHTEND**



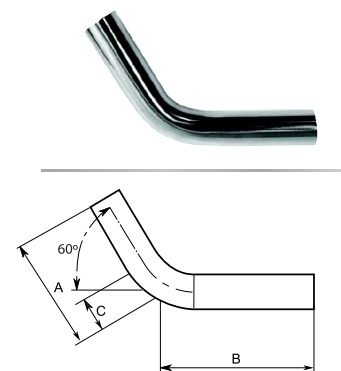
Ref.	Ø	A	B	C	Peso / Weight / Poid / Gewicht Kg	U. /
26CPJP18X12	18 x 1/2"	19	51	32	0,065	15
26CPJP18X34	18 x 3/4"	19	54,5	32	0,098	10
26CPJP22X34	22 x 3/4"	22	67,5	38	0,150	10
26CPJP22X10	22 x 1"	22	72,5	38	0,172	10

**CURVA DE AJUSTE 15° • BEND 15° • COUDE D'AJUSTEMENT 15° • PASSBOGEN 15° AA**


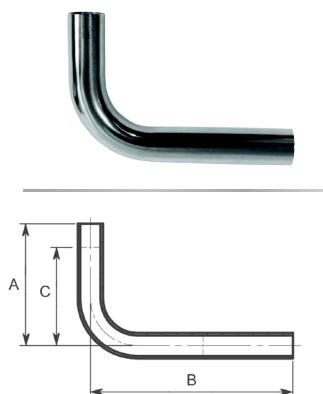
Ref.	Ø	A	B	C	Peso / Weight / Poid / Gewicht Kg	U. /
26CA1528	28 x 28	67	134	48	0,193	1
26CA1535	35 x 35	78	222	53	0,372	1
26CA1542	42 x 42	121	280	59	0,575	1
26CA1554	54 x 54	140	337	67	0,837	1

**CURVA DE AJUSTE 30° • BEND 30° • COUDE D'AJUSTEMENT 30° • PASSBOGEN 30° AA**


Ref.	Ø	A	B	C	Peso / Weight / Poid / Gewicht Kg	U. /
26CA3028	28 x 28	70	130	54	0,195	1
26CA3035	35 x 35	86	214	60	0,372	1
26CA3042	42 x 42	135	265	69	0,576	1
26CA3054	54 x 54	136	326	79	0,845	1

**CURVA DE AJUSTE 60° • BEND 60° • COUDE D'AJUSTEMENT 60° • PASSBOGEN 60° AA**


Ref.	Ø	A	B	C	Peso / Weight / Poid / Gewicht Kg	U. /
26CA6028	28 x 28	67	134	48	0,193	1
26CA6035	35 x 35	78	222	53	0,372	1
26CA6042	42 x 42	121	280	59	0,575	1
26CA6054	54 x 54	140	337	67	0,837	1

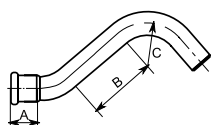
**CURVA DE AJUSTE 90° • BEND 90° • COUDE D'AJUSTEMENT 90° • PASSBOGEN 90° AA**


Ref.	Ø	A	B	C	Peso / Weight / Poid / Gewicht Kg	U. /
26CA9015	15 x 15	75	122	58	0,059	10
26CA9018	18 x 18	74	120	63	0,106	1
26CA9022	22 x 22	77	120	70	0,134	1
26CA9028	28 x 28	102	120	80	0,155	4
26CA9035	35 x 35	130	200	100	0,364	1
26CA9042	42 x 42	185	250	120	0,575	1
26CA9054	54 x 54	207	300	145	0,846	1

**CURVA DESVIACIÓN MH • BY-PASS BEND Ø X PRESS • BAÏONETTE MF • SPRUNGBOGEN IA**



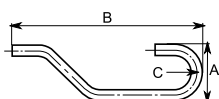
Ref.	Ø	A	B	C	Peso / Weight / Poid / Gewicht Kg	U. /
26CDHM15	15 x 15	15,5	43	28	0,052	10
26CDHM18	18 x 18	18	51	32	0,070	5
26CDHM22	22 x 22	19,5	43	38	0,093	5



**CURVA DESVIACIÓN CISNE • COMPRESSED AIR BEND • CROSSE D'ÉVÊQUE • DRUCKLUFT-ROHRBOGEN**



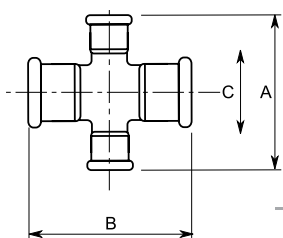
Ref.	Ø	A	B	C	Peso / Weight / Poid / Gewicht Kg	U. /
26CC15	15 x 15	98	306	41	0,164	10
26CC18	18 x 18	144	370	63	0,197	10
26CC22	22 x 22	170	410	73	0,210	5



**CRUZ REDUCIDA • CROSSOVER COUPLING 4 X PRES • CROIX REDUCTION • HREUZSTÜCK 90°**



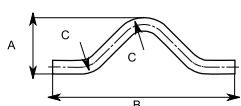
Ref.	Ø	A	B	C	Peso / Weight / Poid / Gewicht Kg	U. /
26CR18X28X28X18	18 x 28 x 28 x 18	79	98	35	-	1
26CR22X42X42X22	22 x 42 x 42 x 22	108	-	-	-	3
26CR28X76X76X28	28 x 76,1 x 76,1 x 28	142	-	-	-	1
26CR28X88X88X28	28 x 88,9 x 88,9 x 28	156	290	100	1,358	1
26CR42X42X42X42	42 x 42 x 42 x 42	-	-	-	-	3
26CR42X76X76X42	42 x 76,1 x 76,1 x 42	142	265	84	-	1
26CR42X88X88X42	42 x 88,9 x 88,9 x 42	156	-	-	-	1
26CR42X108X42	42 x 108,0 x 108,0 x 42	-	-	-	-	1
26CR54X88X88X54	54 x 88,9 x 88,9 x 54	-	-	-	-	1

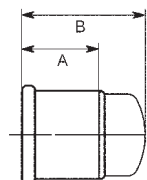


**SALTATUBOS • STRAIGHT BY-PASS Ø X Ø • CHAPEAU DE GENDARME • ÜBERSPRUNGBOGEN AA**



Ref.	Ø	A	B	C	Peso / Weight / Poid / Gewicht Kg	U. /
26ST15	15 x 15	62	200	28	0,074	10
26ST18	18 x 18	73	230	32	0,111	10
26ST22	22 x 22	75	255	38	0,143	10
26ST28	28 x 28	94	280	50	0,220	5



**TAPÓN • ENDCAP PRESS • BOUCHON • VERSCHLUSSKAPPE**


Ref.	Ø	A	B	Peso / Weight / Poid / Gewicht Kg	U. /
26TA15	15	19	34,5	0,019	10
26TA18	18	22	39	0,023	10
26TA22	22	21,5	37,5	0,031	10
26TA28	28	26,5	43	0,044	5
26TA35	35	29	49	0,057	5
26TA42	42	31	54,5	0,119	5
26TA54	54	34	63	0,171	3
26TA76	76,1	53,5	97	0,427	1
26TA88	88,9	57,5	108	0,559	1
26TA108	108,0	75	129	0,821	1