

ACCESORIOS FILPRESS AISI-316L - PERFIL F  
FILPRESS PRESSFITTINGS AISI-316L - PROFILE F  
FILPRESS RACCORDS À SERTIR EN ACIER INOXYDABLE AISI-316L  
FILPRESS PRESSFITTINGS AUS EDELSTAHL 1.4404 FÜR DÜNNWANDIGE EDELSTAHLROHRE - PRESSKONTUR F

ACCESORIOS INSTALPRESS AISI-316L - PERFIL M  
INSTALPRESS PRESSFITTINGS AISI-316L - PROFILE M  
INSTALPRESS RACCORDS À SERTIR EN ACIER INOXYDABLE AISI-316L  
INSTALPRESS PRESSFITTINGS AUS EDELSTAHL 1.4404 FÜR DÜNNWANDIGE EDELSTAHLROHRE - PRESSKONTUR M

ACCESORIOS ACERO AL CARBONO - PERFIL M  
STEEL ZINC PLATED PRESSFITTINGS - M PROFILE  
RACCORDS À SERTIR EN ACIER GALVANISÉ  
C-STAHLE PRESSFITTINGS - PRESSKONTUR M

ACCESORIOS ACERO AL CARBONO FIREPRESS - PERFIL M  
FIREPRESS STEEL ZINC PLATED PRESSFITTINGS - M PROFILE  
FIREPRESS RACCORDS À SERTIR EN ACIER GALVANISÉ  
FIREPRESS C-STAHLE PRESSFITTINGS - PRESSKONTUR M

JUNTAS  
O-RINGS  
JOINTS  
DICHTUNG

MÁQUINAS DE PRENSAR  
PRESS MACHINES  
MACHINES PRESSER  
PRESSMASCHINEN

**ACCESORIOS CAPILARES AISI-316**  
CAPILLARY FITTINGS AISI-316  
ACCESSOIRES CAPILLAIRES - AISI-316  
LÖTFITTINGS 1.4401

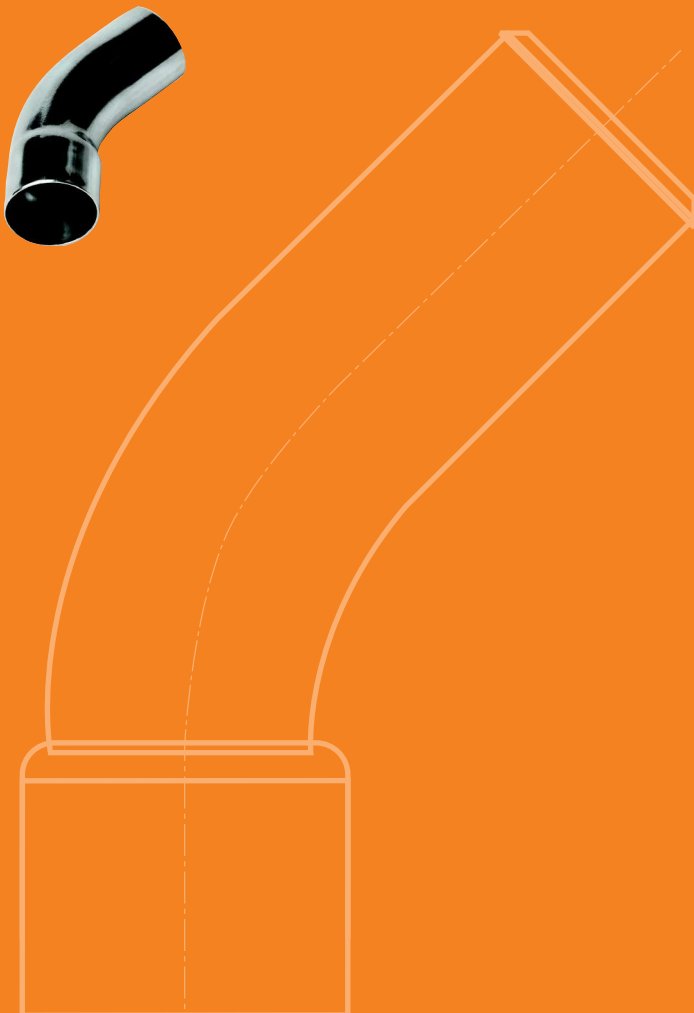
ABRAZADERAS  
PIPE CLAMPS  
COLLIERS DE FIXATION  
ROHRSCHELLEN

VÁLVULAS AISI-316  
VALVES AISI-316  
BOISSEAUX AISI-316  
KUGELHÄHNE EDELSTAHL 1.4401

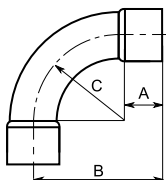
ACCESORIOS ROSCADOS DIN-2999 AISI-316  
THREADED FITTINGS DIN-2999 AISI-316  
ACCESSOIRES FILETÉS DIN-2999 AISI-316  
GEWINDEFITTINGE DIN-2999 1.4401

ACCESORIOS DE COMPRESIÓN DIN-2353 AISI-316  
COMPRESSION FITTINGS DIN-2353 AISI-316  
RACCORDS À COMPRESSION DIN-2353 AISI-316  
SCHNEIDRINGVERSCHRAUBUNGEN DIN-2353 1.4401

MANUAL TÉCNICO PRESSFITTINGS INSTALPRESS  
PRESSFITTINGS INSTALPRESS TECHNICAL MANUAL

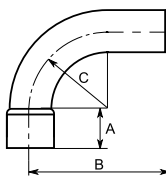


**CURVA 90° HH • 90° ELBOW FF • COUDE 90° FF • BOGEN 90° II**



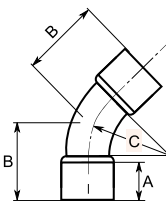
Ref.	Ø	A	B	C	U. /
204C90HH10	10	9	30,5	20	25
204C90HH12	12	10	35,5	24	25
204C90HH15	15	12	41,5	28	25
204C90HH18	18	14	47,5	32	25
204C90HH22	22	17	56,5	38	15
204C90HH28	28	20	72	50	5
204C90HH35	35	25	95	68	5
204C90HH42	42	29	112	80	5

**CURVA 90° HM • 90° ELBOW FM • COUDE 90° FM • BOGEN 90° IA**



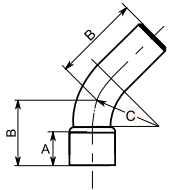
Ref.	Ø	A	B	C	U. /
204C90HM10	10	9	31	20	25
204C90HM12	12	10	36	24	25
204C90HM15	15	12	42	28	25
204C90HM18	18	14	48	32	25
204C90HM22	22	17	57	38	15
204C90HM28	28	20	72	50	5
204C90HM35	35	25	95	68	5
204C90HM42	42	29	111	80	5

**CURVA 45° HH • 45° ELBOW FF • COUDE 45° FF • BOGEN 45° II**



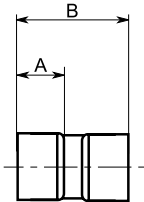
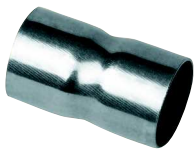
Ref.	Ø	A	B	C	U. /
204C45HH10	10	9	19	20	25
204C45HH12	12	10	28	24	25
204C45HH15	15	12	30	28	25
204C45HH18	18	14	33	32	25
204C45HH22	22	17	38	38	25
204C45HH28	28	20	48	50	10
204C45HH35	35	25	65	68	10
204C45HH42	42	29	77	80	5

**CURVA 45° HM • 45° ELBOW FM • COUDE 45° FM • BOGEN 45° IA**



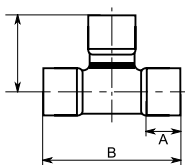
Ref.	Ø	A	B	C	U. /
204C45HM10	10	9	19	20	25
204C45HM12	12	10	28	24	25
204C45HM15	15	12	30	28	25
204C45HM18	18	14	33	32	25
204C45HM22	22	17	38	38	25
204C45HM28	28	20	48	50	10
204C45HM35	35	25	65	68	10
204C45HM42	42	29	77	80	5

**MANGUITO HH • COUPLING FF • MANCHON TARAUDÉ FF • MUFFE II**



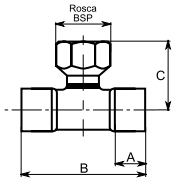
Ref.	Ø	A	B	U. /
204M10	10	9	24	25
204M12	12	10	26	25
204M15	15	12	30	25
204M18	18	14	34	25
204M22	22	17	40	25
204M28	28	20	46	10
204M35	35	25	56	10
204M42	42	29	64	10

**TE IGUAL HHH • EQUAL TEE FFF • TÉ ÉGAL FFF • T-STÜCK III**



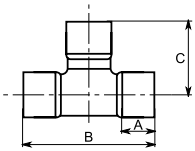
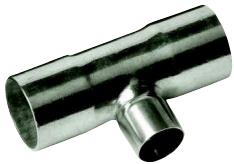
Ref.	Ø	A	B	C	U. /
204T10	10	9	38	19	25
204T12	12	10	42	21	25
204T15	15	12	49	24,5	25
204T18	18	14	56	28	25
204T22	22	17	66	33	15
204T28	28	20	80	40	5
204T35	35	25	99	49,5	5
204T42	42	29	114	57	5

TE ROSCADA H • BRANCH TEE • TÉ TARAUDÉ • T-STÜCK IG



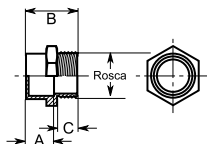
Ref.	Ø	A	B	C	U. /
204TH15X12	15 x 1/2"	12	49	34	10
204TH18X12	18 x 1/2"	14	56	36	10
204TH22X12	22 x 1/2"	17	66	38	10

TE REDUCCIÓN • REDUCING TEE • TÉ RÉDUIT • T-STÜCK REDUZIERT



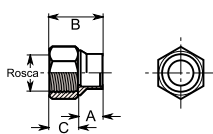
Ref.	Ø	A	B	C	U. /
204TR15X12	15 x 12	12	49	22,5	25
204TR18X12	18 x 12	14	56	24	25
204TR18X15	18 x 15	14	56	26	25
204TR22X12	22 x 12	17	66	26	15
204TR22X15	22 x 15	17	66	28	15
204TR22X18	22 x 18	17	66	30	15
204TR28X15	28 x 15	17	80	31	5
204TR28X18	28 x 18	20	80	33,5	5
204TR28X22	28 x 22	20	80	37	5
204TR35X15	35 x 15	20	65	33	5
204TR35X18	35 x 18	25	65	35	5
204TR35X22	35 x 22	25	65	36,5	5
204TR35X28	35 x 28	25	99	43,5	5
204TR42X15	42 x 15	29	86	37	5
204TR42X18	42 x 18	29	86	39	4
204TR42X22	42 x 22	29	86	41	4
204TR42X28	42 x 28	29	86	44	4
204TR42X35	42 x 35	29	86	41	4

**ENLACE MACHO • MALE THREAD CONNECTOR • RACCORD FILETÉ • ÜBERGANG AG**



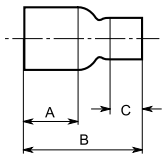
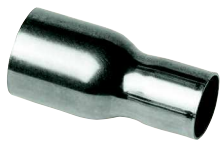
Ref.	Ø	A	B	C	U. /
204EM10X14	10 x 1/4"	8	19	9	10
204EM10X38	10 x 3/8"	8	20	10	10
204EM12X38	12 x 3/8"	10	21	10	10
204EM12X12	12 x 1/2"	10	23	11	10
204EM15X12	15 x 1/2"	11	23	11	10
204EM18X12	18 x 1/2"	13	26	11	10
204EM18X34	18 x 3/4"	13	28	13	10
204EM22X34	22 x 3/4"	16	32	13	10
204EM22X10	22 x 1"	16	33	13,5	10
204EM28X10	28 x 1"	19	35	13,5	10
204EM35X114	35 x 1 1/4"	22	43	16	10
204EM42X112	42 x 1 1/2"	24	48	17	10

**ENLACE HEMBRA • FEMALE THREAD CONNECTOR • RACCORD TARAUDÉ • ÜBERGANGSVERSCHRAUBUNG IG**



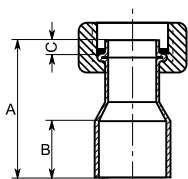
Ref.	Ø	A	B	C	U. /
204EH10X14	10 x 1/4"	8	21	11	10
204EH10X38	10 x 3/8"	8	23	13	10
204EH12X38	12 x 3/8"	10	24	13	10
204EH12X12	12 x 1/2"	10	26	15	10
204EH15X12	15 x 1/2"	11	27	15	10
204EH18X12	18 x 1/2"	13	29	15	10
204EH18X34	18 x 3/4"	13	31	17	10
204EH22X34	22 x 3/4"	16	34	17	10
204EH22X10	22 x 1"	16	36	18	10
204EH28X10	28 x 1"	19	36	18	10
204EH35X114	35 x 1 1/4"	22	45	21	10
204EH42X112	42 x 1 1/2"	24	50	23	10

REDUCCIÓN MH • REDUCER MF • RÉDUCTION MF • REDUZIERMUFFE IA



Ref.	Ø	A	B	C	U. /
204RE12X10	12 x 10	10	25	9	25
204RE15X10	15 x 10	13	35	9	25
204RE15X12	15 x 12	13	37	11	25
204RE18X12	18 x 12	15	40	11	25
204RE18X15	18 x 15	15	40	13	25
204RE22X12	22 x 12	18	44	11	25
204RE22X15	22 x 15	18	49	13	25
204RE22X18	22 x 18	18	47	13	25
204RE28X12	28 x 12	20	40	10	10
204RE28X15	28 x 15	20	45	12	10
204RE28X18	28 x 18	20	52	14	10
204RE28X22	28 x 22	20	59	17	10
204RE35X28	35 x 28	27	62	20	10
204RE42X28	42 x 28	31	67	20	5
204RE42X35	42 x 35	29	70	23	5

RACOR 2 PIEZAS • STRAIGHT TAP CONNECTOR • ÉCROU TOURNANT • ÜBERGANGSMUFFE IG

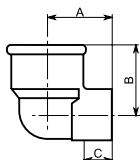


Ref.	Ø	A	B	C	U. /
204RP12X38	12 x 3/8"	33	10	3,5	25
204RP12X12	12 x 1/2"	38	10	3,5	25
204RP15X12	15 x 1/2"	37	12	3,5	25
204RP18X12	18 x 1/2"	36	15	3,5	25
204RP18X34	18 x 3/4"	42	15	3,5	25
204RP18X78	18 x 7/8"	42	15	3,5	10
204RP22X34	22 x 3/4"	41	18	3,5	25
204RP22X78	22 x 7/8"	41	18	4	10
204RP22X10	22 x 1"	48	18	4	15
204RP28X10	28 x 1"	48	22	4	15
204RP28X114	28 x 1 1/4"	48	22	4	10
204RP35X114	35 x 1 1/4"	51	25	3,5	10
204RP42X112	42 x 1 1/2"	61	29	3,5	10

**CODO HEMBRA • ELBOW FEMALE • COUDE TARAUDÉ • WINKEL 90° IG**



Ref.	Ø	A	B	C	U. /
204CH15X12	15 x 1/2"	22	25	12	10
204CH18X12	18 x 1/2"	22	25	10	10



**CURVA 2 PIEZAS • BEND 2 PIECES • ÉCROU TOURNANT • ÜBERGANGSWINKEL 90° IG**



Ref.	Ø	A	B	C	U. /
204CP12X38	12 x 3/8"	10	36	24	25
204CP15X12	15 x 1/2"	12	38	28	25
204CP18X34	18 x 3/4"	14	44	32	15
204CP22X10	22 x 1"	17	54	38	10

