

ACCESORIOS FILPRESS AISI-316L - PERFIL F
FILPRESS PRESSFITTINGS AISI-316L - PROFILE F
FILPRESS RACCORDS À SERTIR EN ACIER INOXYDABLE AISI-316L
FILPRESS PRESSFITTINGS AUS EDELSTAHL 1.4404 FÜR DÜNNWANDIGE EDELSTAHLROHRE - PRESSKONTUR F

ACCESORIOS INSTALPRESS AISI-316L - PERFIL M
INSTALPRESS PRESSFITTINGS AISI-316L - PROFILE M
INSTALPRESS RACCORDS À SERTIR EN ACIER INOXYDABLE AISI-316L
INSTALPRESS PRESSFITTINGS AUS EDELSTAHL 1.4404 FÜR DÜNNWANDIGE EDELSTAHLROHRE - PRESSKONTUR M

ACCESORIOS ACERO AL CARBONO - PERFIL M
STEEL ZINC PLATED PRESSFITTINGS - M PROFILE
RACCORDS À SERTIR EN ACIER GALVANISÉ
C-STAHl PRESSFITTINGS - PRESSKONTUR M

ACCESORIOS ACERO AL CARBONO FIREPRESS - PERFIL M
FIREPRESS STEEL ZINC PLATED PRESSFITTINGS - M PROFILE
FIREPRESS RACCORDS À SERTIR EN ACIER GALVANISÉ
FIREPRESS C-STAHl PRESSFITTINGS - PRESSKONTUR M

JUNTAS
O-RINGS
JOINTS
DICHTUNG

MÁQUINAS DE PRENSAR
PRESS MACHINES
MACHINES PRESSER
PRESSMASCHINEN

ACCESORIOS CAPILARES AISI-316
CAPILLARY FITTINGS AISI-316
ACCESSOIRES CAPILLAIRES - AISI-316
LÖTFITTINGS 1.4401

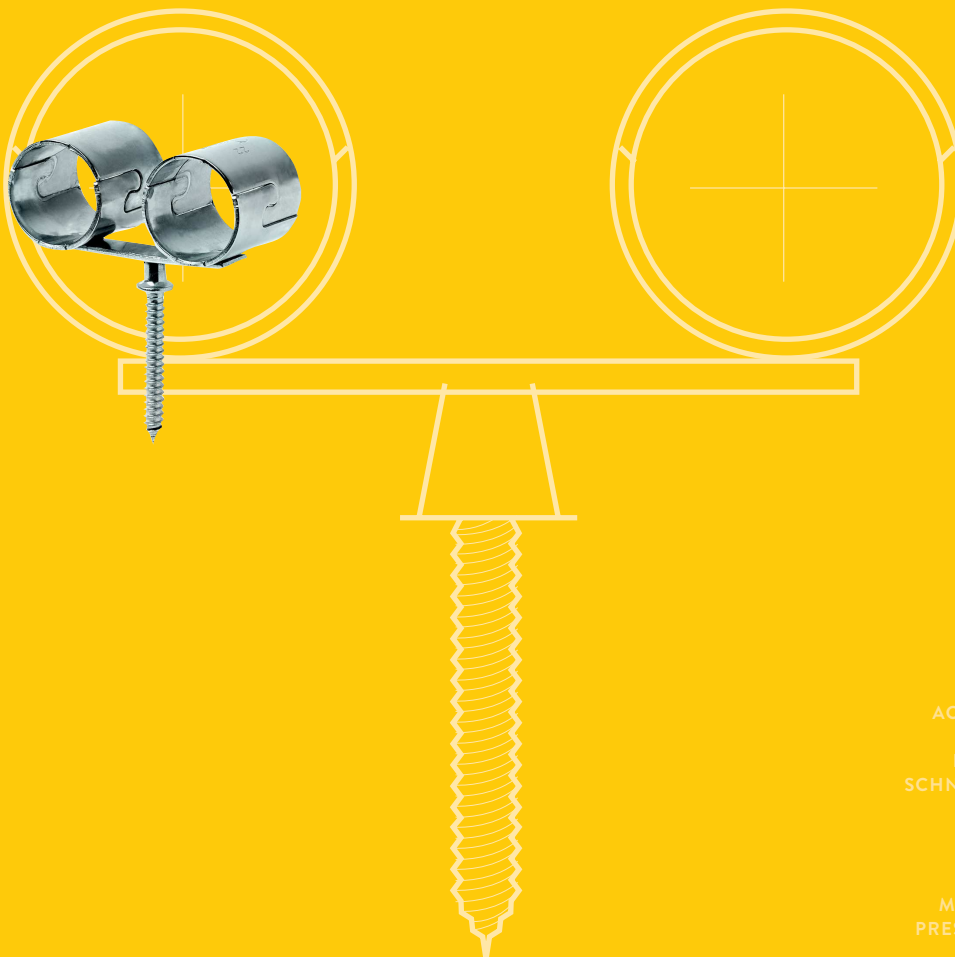
ABRAZADERAS
PIPE CLAMPS
COLLIERS DE FIXATION
ROHRSCHELLEN

VÁLVULAS AISI-316
VALVES AISI-316
BOISSEAUX AISI-316
KUGELHÄHNE EDELSTAHL 1.4401

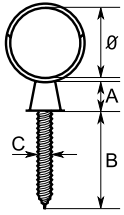
ACCESORIOS ROSCADOS DIN-2999 AISI-316
THREADED FITTINGS DIN-2999 AISI-316
ACCESSOIRES FILETÉS DIN-2999 AISI-316
GEWINDEFITTINGE DIN-2999 1.4401

ACCESORIOS DE COMPRESIÓN DIN-2353 AISI-316
COMPRESSION FITTINGS DIN-2353 AISI-316
RACCORDS À COMPRESSION DIN-2353 AISI-316
SCHNEIDRINGVERSCHRAUBUNGEN DIN-2353 1.4401

MANUAL TÉCNICO PRESSFITTINGS INSTALPRESS
PRESSFITTINGS INSTALPRESS TECHNICAL MANUAL

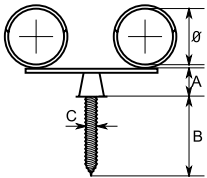


SIMPLE • SINGLE WOOD-SCREW • SIMPLE VIS À BOIS • EINFACH MIT SCHRAUBE



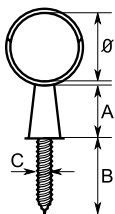
| Ref. | Ø | A | B | C | Peso / Weight / Poid / Gewicht Kg | U. / |
|--------|----|---|----|-----|---|------|
| 40AS10 | 10 | 7 | 25 | 3,9 | 0,005 | 150 |
| 40AS12 | 12 | 7 | 25 | 3,9 | 0,006 | 150 |
| 40AS15 | 15 | 7 | 35 | 4,8 | 0,011 | 90 |
| 40AS18 | 18 | 7 | 35 | 4,8 | 0,014 | 60 |
| 40AS22 | 22 | 7 | 35 | 4,8 | 0,022 | 40 |
| 40AS28 | 28 | 7 | 35 | 4,8 | 0,032 | 20 |
| 40AS35 | 35 | 9 | 45 | 6,3 | 0,065 | 10 |
| 40AS42 | 42 | 9 | 45 | 6,3 | 0,088 | 7 |

DOBLE • DOUBLE WOOD-SCREW • DOUBLE VIS À BOIS • DOPPELT MIT SCHRAUBE



| Ref. | Ø | A | B | C | Peso / Weight / Poid / Gewicht Kg | U. / |
|--------|----|---|----|-----|---|------|
| 40AD10 | 10 | 8 | 25 | 3,9 | 0,014 | 75 |
| 40AD12 | 12 | 8 | 25 | 3,9 | 0,016 | 50 |
| 40AD15 | 15 | 8 | 35 | 4,8 | 0,026 | 30 |
| 40AD18 | 18 | 8 | 35 | 4,8 | 0,032 | 25 |
| 40AD22 | 22 | 8 | 35 | 4,8 | 0,050 | 15 |

PLUS • PLUS WOOD-SCREW • PLUS VIS À BOIS • EINFACH MIT ABSTANDHALTER

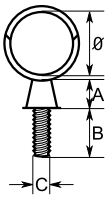


| Ref. | Ø | A | B | C | Peso / Weight / Poid / Gewicht Kg | U. / |
|--------|----|----|----|-----|---|------|
| 40AP15 | 15 | 13 | 35 | 4,8 | 0,014 | 75 |
| 40AP18 | 18 | 13 | 35 | 4,8 | 0,017 | 50 |
| 40AP22 | 22 | 13 | 35 | 4,8 | - | 30 |
| 40AP28 | 28 | 13 | 35 | 4,8 | 0,045 | 15 |
| 40AP35 | 35 | 13 | 45 | 6,3 | 0,073 | 8 |
| 40AP42 | 42 | 13 | 45 | 6,3 | 0,096 | 5 |

MACHO • METRIC MALE • MÉTRIC MÁLE • EINFACH MIT METRISCHER SCHRAUBE



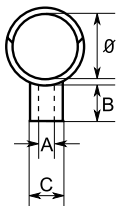
| Ref. | Ø | A | B | C | Peso / Weight / Poid / Gewicht Kg | U. / |
|--------|----|---|----|----|---|------|
| 40AM10 | 10 | 5 | 12 | 7 | 0,005 | 150 |
| 40AM12 | 12 | 5 | 12 | 7 | 0,006 | 150 |
| 40AM15 | 15 | 6 | 12 | 6 | 0,011 | 90 |
| 40AM18 | 18 | 6 | 12 | 6 | 0,014 | 60 |
| 40AM22 | 22 | 6 | 12 | 6 | 0,022 | 40 |
| 40AM28 | 28 | 6 | 12 | 6 | 0,032 | 20 |
| 40AM35 | 35 | 8 | 16 | 10 | 0,042 | 10 |
| 40AM42 | 42 | 8 | 16 | 10 | 0,086 | 7 |



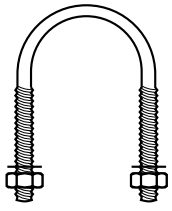
HEMBA • METRIC FEMALE • MÉTRIC FEMELLE • EINFACH MIT EINFACH MIT METRISCHER SCHRAUBE



| Ref. | Ø | A | B | C | Peso / Weight / Poid / Gewicht Kg | U. / |
|--------|----|---|----|----|---|------|
| 40AH10 | 10 | 5 | 9 | 10 | 0,006 | 150 |
| 40AH12 | 12 | 5 | 9 | 10 | 0,006 | 150 |
| 40AH15 | 15 | 6 | 10 | 12 | 0,011 | 90 |
| 40AH18 | 18 | 6 | 10 | 12 | 0,015 | 60 |
| 40AH22 | 22 | 6 | 10 | 12 | 0,022 | 40 |
| 40AH28 | 28 | 6 | 10 | 12 | 0,032 | 20 |
| 40AH35 | 35 | 8 | 12 | 15 | 0,061 | 10 |
| 40AH42 | 42 | 8 | 12 | 15 | 0,082 | 7 |

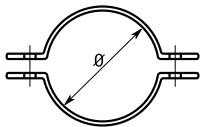


ABARCÓN AISI-304 • U-SHAPED STAPLE AISI-304 • ETRIERS EN U AISI-304 • RUNDSTAHLBÜGEL EDELSTAHL 1.4301



| Ref. | Ø | Ø ISO | Metrica | Peso / Weight / Poid / Gewicht Kg | U. / |
|--------|-----|--------|---------|---|------|
| 41A3/8 | 18 | 1/4" | M6 | 0,023 | 100 |
| 41A12 | 22 | 1/2" | M6 | 0,026 | 100 |
| 41A34 | 28 | 3/4" | M6 | 0,029 | 100 |
| 41A1 | 34 | 1" | M6 | 0,032 | 100 |
| 41A38 | 39 | 39mm | M6 | 0,033 | 120 |
| 41A114 | 43 | 1 1/4" | M6 | 0,034 | 100 |
| 41A112 | 49 | 1 1/2" | M8 | 0,069 | 100 |
| 41A53 | 54 | 53mm | M8 | 0,074 | 100 |
| 41A54 | 55 | 54mm | M8 | 0,077 | 170 |
| 41A2 | 61 | 2" | M8 | 0,081 | 100 |
| 41A65 | 66 | 66mm | M8 | 0,084 | 100 |
| 41A212 | 77 | 2 1/2" | M8 | 0,094 | 100 |
| 41A84 | 85 | 85mm | M8 | 0,099 | 50 |
| 41A3 | 90 | 3" | M8 | 0,101 | 50 |
| 41A104 | 105 | 105mm | M10 | 0,198 | 50 |
| 41A4 | 115 | 4" | M10 | 0,211 | 50 |
| 41A129 | 130 | 130mm | M10 | 0,227 | 50 |
| 41A5 | 144 | 5" | M10 | 0,252 | 50 |
| 41A154 | 155 | 155mm | M10 | 0,284 | 30 |
| 41A6 | 170 | 6" | M10 | 0,282 | 25 |
| 41A204 | 206 | 206mm | M10 | 0,323 | 25 |

ABRAZADERA ALIMENTARIA (AISI-304L) • HOOD CLAMPS (AISI-304L) • COLLIER ALIMENTER (AISI-304L) • COLLIER ALIMENTER (AISI-304L)



| Ref. | Ø | Peso / Weight / Poid / Gewicht Kg | U. / |
|---------|-----|---|------|
| 41AA15 | 12 | - | 100 |
| 41AA18 | 18 | 0,036 | 100 |
| 41AA22 | 22 | 0,056 | 50 |
| 41AA28 | 28 | 0,062 | 50 |
| 41AA34 | 34 | 0,069 | 50 |
| 41AA40 | 40 | 0,073 | 50 |
| 41AA52 | 52 | 0,141 | 25 |
| 41AA63 | 63 | 0,163 | 25 |
| 41AA70 | 70 | 0,171 | 25 |
| 41AA85 | 85 | 0,221 | 20 |
| 41AA104 | 104 | 0,115 | 15 |
| 41AA129 | 129 | 0,498 | 8 |
| 41AA154 | ■ | 0,754 | ■ |

ABRAZADERAS ELÉCTRICAS GRAPA DOBLE (AISI-304) • PAIR CONDUIT CLIP (AISI-304) •
COLLIER ELÉCTRIQUE DOUBLE (AISI-304) • DOPPELT ELEKTRISCHE ROHRSCHELLEN EDELSTAHL 1.4301



| Ref. | Ø | Peso / Weight / Poid / Gewicht Kg | U. / |
|---------|----|---|------|
| 41AGD15 | 15 | 0,014 | 100 |
| 41AGD18 | 18 | 0,015 | 100 |
| 41AGD22 | 22 | 0,018 | 100 |
| 41AGD28 | 28 | 0,020 | 100 |
| 41AGD35 | 35 | 0,028 | 50 |
| 41AGD42 | 42 | 0,032 | 50 |

ABRAZADERAS ELÉCTRICAS GRAPA SIMPLE (AISI-304) • CONDUIT CLIP (AISI-304) •
COLLIER ELÉCTRIQUE SIMPLE (AISI-304) • ELEKTRISCHE ROHRSCHELLEN MIT SCHLICHT EDELSTAHL 1.4301



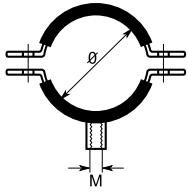
| Ref. | Ø | Peso / Weight / Poid / Gewicht Kg | U. / |
|---------|----|---|------|
| 41AGS15 | 15 | 0,007 | 100 |
| 41AGS18 | 18 | 0,009 | 100 |
| 41AGS22 | 22 | 0,010 | 100 |
| 41AGS28 | 28 | 0,013 | 100 |
| 41AGS35 | 35 | 0,016 | 100 |
| 41AGS42 | 42 | 0,018 | 50 |

ABRAZADERAS ELÉCTRICAS EN U (AISI-304) • BRIDGE CONDUIT CLIP (AISI-304) •
COLLIER ELÉCTRIQUE EN U (AISI-304) • U TYP ELEKTRISCHE ROHRSCHELLEN EDELSTAHL 1.4301



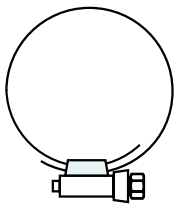
| Ref. | Ø | U. / |
|---------|----|------|
| 41AGU15 | 15 | 100 |
| 41AGU18 | 18 | 100 |
| 41AGU22 | 22 | 100 |
| 41AGU28 | 28 | 50 |
| 41AGU35 | 35 | 50 |
| 41AGU42 | 42 | 50 |

DOBLE ROSCA M8-M10 AISI-316 • DOUBLE NUT M8-M10 AISI-316 • COLLIERS AVEC ÉCROU M8-M10 AISI-316 • ROHRSCHELLEN MIT SCHALLDÄMMEINLAGE MUTTER M8-M10 EDELSTAHL 1.4401



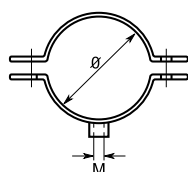
| Ref. | Ø | Ø ISO | Metrica | Peso / Weight / Poid / Gewicht Kg | U. / |
|-----------|---------|---------|---------|-----------------------------------|------|
| 41AIDR12 | 21-26 | 1/2" | M6 | 0,037 | 50 |
| 41AIDR34 | 26-31 | 3/4" | M6 | 0,079 | 50 |
| 41AIDR1 | 33-38 | 1" | M6 | 0,092 | 50 |
| 41AIDR114 | 40-45 | 1 1/4" | M8 | 0,097 | 25 |
| 41AIDR112 | 47-52 | 1 1/2" | M8 | 0,100 | 25 |
| 41AIDR54 | 52-57 | 54 mm. | M8 | 0,120 | 25 |
| 41AIDR2 | 60-65 | 2" | M8 | 0,131 | 25 |
| 41AIDR212 | 72-77 | 2 1/2" | M8 | 0,155 | 25 |
| 41AIDR3 | 87-94 | 3" | M8 | 0,176 | 10 |
| 41AIDR110 | 107-114 | 110 mm. | M8 | 0,187 | 25 |
| 41AIDR4 | 111-118 | 4" | M8 | 0,210 | 10 |
| 41AIDR125 | 121-128 | 125 mm. | M10 | 0,217 | 10 |
| 41AIDR5 | 133-140 | 5" | M10 | 0,250 | 10 |
| 41AIDR154 | 147-155 | 154 mm. | M10 | 0,291 | 10 |
| 41AIDR6 | 158-170 | 6" | M10 | 0,273 | 5 |

SINFÍN AISI-304 • JUBILEE CLIPS AISI-304 • COLLIER DE SERRAGE AISI-304 • SCHNECKENGEWINDESCHELLEN EDELSTAHL 1.4301



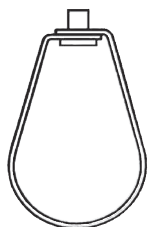
| Ref. | Ø | Peso / Weight / Poid / Gewicht Kg | U. / |
|--------------|---------|-----------------------------------|------|
| 41ASF10X16 | 10-16 | 0,012 | 100 |
| 41ASF16X27 | 16-27 | 0,018 | 100 |
| 41ASF25X40 | 25-40 | 0,020 | 100 |
| 41ASF32X50 | 32-50 | 0,024 | 50 |
| 41ASF50X70 | 50-70 | 0,027 | 50 |
| 41ASF70X90 | 70-90 | 0,036 | 25 |
| 41ASF90X110 | 90-110 | 0,039 | 25 |
| 41ASF110X130 | 110-130 | 0,045 | 25 |
| 41ASF130X150 | 130-150 | 0,048 | 25 |

TIPO "F" AISI-316 • TYPE "F" AISI-316 • TYPE "F" AISI-316 • ROHRSCHELLEN F-AUSFÜHRUNG EDELSTAHL 1.4401



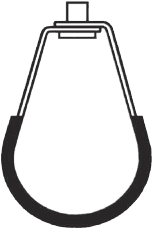
| Ref. | Ø | Ø ISO | Metrica | Peso / Weight / Poid / Gewicht Kg | U. / |
|----------|---------|--------|---------|-----------------------------------|------|
| 41ATF38 | 16-20 | 3/8" | M8 | 0,049 | 50 |
| 41ATF12 | 21-26 | 1/2" | M8 | 0,053 | 50 |
| 41ATF34 | 26-31 | 3/4" | M8 | 0,059 | 50 |
| 41ATF1 | 33-38 | 1" | M8 | 0,065 | 50 |
| 41ATF114 | 40-45 | 1 1/4" | M8 | 0,072 | 50 |
| 41ATF112 | 47-52 | 1 1/2" | M8 | 0,077 | 50 |
| 41ATF54 | 52-57 | 54mm | M8 | 0,083 | 50 |
| 41ATF2 | 60-65 | 2" | M8 | 0,091 | 50 |
| 41ATF212 | 72-77 | 2 1/2" | M8-M10 | 0,108 | 50 |
| 41ATF3 | 87-94 | 3" | M8-M10 | 0,127 | 25 |
| 41ATF100 | 98-105 | 100mm | M8-M10 | 0,143 | 10 |
| 41ATF110 | 107-114 | 110mm | M8-M10 | 0,152 | 25 |
| 41ATF4 | 111-118 | 4" | M8-M10 | 0,155 | 25 |
| 41ATF125 | 121-128 | 125mm | M8-M10 | 0,167 | 25 |
| 41ATF5 | 133-140 | 5" | M8-M10 | 0,186 | 10 |
| 41ATF154 | 147-155 | 154mm | M8-M10 | 0,192 | 10 |
| 41ATF6 | 158-170 | 6" | M8-M10 | 0,216 | 25 |
| 41ATF204 | 198-210 | 204mm | M8-M10 | 0,272 | 5 |

ABRAZADERA TIPO PERA (AISI-304L) • PEAR CLAMP (AISI-304L) • COLLIER TYPE POIRE (AISI-304L) • BIRNE TYP ROHRSCHELLEN (EDELSTAHL 1.4307)



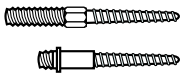
| Ref. | Ø | Metrica | Peso / Weight / Poid / Gewicht Kg | U. / |
|----------|---------------|---------|-----------------------------------|------|
| 41ATP22 | 22 - 3/4" | M8 | 0,035 | 50 |
| 41ATP28 | 28 - 1" | M8 | 0,042 | 50 |
| 41ATP35 | 35 - 1 1/4" | M8 | 0,057 | 50 |
| 41ATP42 | 42 - 1 1/2" | M8 | 0,063 | 50 |
| 41ATP54 | 54 - 2" | M8 | 0,075 | 50 |
| 41ATP76 | 76,1 - 2 1/2" | M10 | 0,085 | 25 |
| 41ATP88 | 88,9 - 3" | M10 | 0,110 | 25 |
| 41ATP108 | 108,0 - 4" | M10 | 0,137 | 20 |

ABRAZADERA TIPO PERA ISOFÓNICA (AISI-304L) • ISOPHONIC PEAR CLAMP (AISI-304L) • COLLIER ISOPHONIQUE TYPE POIRE (AISI-304L) • BIRNE TYP ROHRSCHELLEN MIT GUMMISCHTUZ (EDELSTAHL 1.4307)



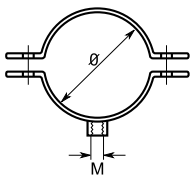
| Ref. | Ø | Metrica | Peso / Weight / Poid / Gewicht Kg | U. / |
|-----------|---------------|---------|-----------------------------------|------|
| 41ATPI22 | 22 - 3/4" | M8 | 0,041 | 50 |
| 41ATPI28 | 28 - 1" | M8 | 0,051 | 50 |
| 41ATPI35 | 35 - 1 1/4" | M8 | 0,067 | 50 |
| 41ATPI42 | 42 - 1 1/2" | M8 | 0,077 | 50 |
| 41ATPI54 | 54 - 2" | M8 | 0,088 | 50 |
| 41ATPI76 | 76,1 - 2 1/2" | M10 | 0,101 | 20 |
| 41ATPI88 | 88,9 - 3" | M10 | 0,131 | 25 |
| 41ATPI108 | 108,0 - 4" | M10 | 0,162 | 20 |

ESPÁRRAGOS DOBLE ROSCA AISI-304 • STUT BOLT AISI-304 • STOCKSCHRAUBEN EDELSTAHL 1.4301



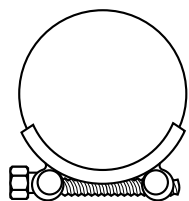
| Ref. | Ø | Metrica | Peso / Weight / Poid / Gewicht Kg | U. / |
|-------------|--------------|---------|-----------------------------------|------|
| 41EM630X10 | 06 x 30 x 10 | M6 | 0,006 | - |
| 41EM850X10 | 08 x 50 x 10 | M8 | 0,016 | - |
| 41EM860X30 | 08 x 60 x 30 | M8 | 0,021 | - |
| 41EM1060X10 | 10 x 60 x 10 | M10 | 0,027 | - |

CON TUERCA AISI-316 • PIPE CLAMPS WITH PLUGS AISI-316 • COLLIERS AVEC ÉCROU AISI-316



| Ref. | Ø | Metrica | Peso / Weight / Poid / Gewicht Kg | U. / |
|------------|-----|---------|-----------------------------------|------|
| 414ACTU12 | 12 | M6 | 0,016 | 50 |
| 414ACTU15 | 15 | M6 | 0,029 | 50 |
| 414ACTU18 | 18 | M6 | 0,031 | 50 |
| 414ACTU20 | 20 | M6 | 0,033 | 50 |
| 414ACTU22 | 22 | M6 | 0,032 | 50 |
| 414ACTU25 | 25 | M6 | 0,032 | 50 |
| 414ACTU28 | 28 | M6 | 0,035 | 50 |
| 414ACTU32 | 32 | M6 | 0,037 | 50 |
| 414ACTU35 | 35 | M6 | 0,038 | 25 |
| 414ACTU40 | 40 | M8 | 0,047 | 25 |
| 414ACTU50 | 50 | M8 | 0,060 | 25 |
| 414ACTU54 | 54 | M8 | 0,058 | 25 |
| 414ACTU63 | 63 | M8 | 0,063 | 25 |
| 414ACTU75 | 75 | M8 | 0,074 | 10 |
| 414ACTU90 | 90 | M8 | 0,084 | 10 |
| 414ACTU110 | 110 | M8 | 0,095 | 10 |

SUPER AISI-316 • ADJUSTABLE CLIPS AISI-316 • COLLIERS FLEXIBLES AISI-316 • GELENKROHRSCHELLEN EDELSTAHL 1.4401



| Ref. | Ø | Fleje | Metrica | Peso / Weight / Poid / Gewicht Kg | U. / |
|-------------|---------|----------|---------|---|------|
| 42SU17X19 | 17-19 | 18 X 0,8 | M5 | 0,030 | 100 |
| 42SU20X22 | 20-22 | 18 X 0,8 | M5 | 0,032 | 100 |
| 42SU23X25 | 23-25 | 18 X 0,8 | M5 | 0,031 | 100 |
| 42SU26X28 | 26-28 | 18 X 0,8 | M5 | 0,034 | 100 |
| 42SU29X31 | 29-31 | 18 X 0,8 | M5 | 0,035 | 100 |
| 42SU32X35 | 32-35 | 18 X 0,8 | M5 | 0,037 | 100 |
| 42SU36X39 | 36-39 | 20 X 1,0 | M6 | 0,075 | 90 |
| 42SU40X43 | 40-43 | 20 X 1,0 | M6 | 0,081 | 75 |
| 42SU44X47 | 44-47 | 20 X 1,0 | M6 | 0,082 | 75 |
| 42SU48X51 | 48-51 | 20 X 1,0 | M6 | 0,083 | 70 |
| 42SU52X55 | 52-55 | 20 X 1,0 | M6 | 0,085 | 60 |
| 42SU56X59 | 56-59 | 20 X 1,0 | M6 | 0,091 | 50 |
| 42SU60X63 | 60-63 | 20 X 1,0 | M6 | 0,093 | 40 |
| 42SU64X67 | 64-67 | 25 X 1,5 | M8 | 0,160 | 60 |
| 42SU68X73 | 68-73 | 25 X 1,5 | M8 | 0,168 | 52 |
| 42SU74X79 | 74-79 | 25 X 1,5 | M8 | 0,173 | 48 |
| 42SU80X85 | 80-85 | 25 X 1,5 | M8 | 0,180 | 44 |
| 42SU86X91 | 86-91 | 25 X 1,5 | M8 | 0,185 | 36 |
| 42SU92X97 | 92-97 | 25 X 1,5 | M8 | 0,184 | 32 |
| 42SU98X103 | 98-103 | 25 X 1,5 | M8 | 0,190 | 24 |
| 42SU104X112 | 104-112 | 25 X 1,5 | M8 | 0,199 | 24 |
| 42SU113X121 | 113-121 | 25 X 1,5 | M8 | 0,207 | 20 |
| 42SU122X130 | 122-130 | 25 X 1,5 | M8 | 0,221 | 20 |
| 42SU131X139 | 131-139 | 25 X 1,8 | M8 | 0,233 | 16 |
| 42SU140X148 | 140-148 | 25 X 1,8 | M8 | 0,238 | 12 |
| 42SU149X161 | 149-161 | 25 X 1,8 | M8 | 0,286 | 8 |
| 42SU162X174 | 162-174 | 25 X 1,8 | M8 | 0,304 | 8 |
| 42SU175X187 | 175-187 | 25 X 1,8 | M8 | 0,324 | 8 |
| 42SU188X200 | 188-200 | 25 X 1,8 | M8 | 0,341 | 8 |
| 42SU201X213 | 201-213 | 25 X 1,8 | M8 | 0,368 | 5 |
| 42SU214X226 | 214-226 | 25 X 1,8 | M8 | 0,388 | 4 |
| 42SU227X239 | 227-239 | 25 X 1,8 | M8 | 0,290 | 1 |